

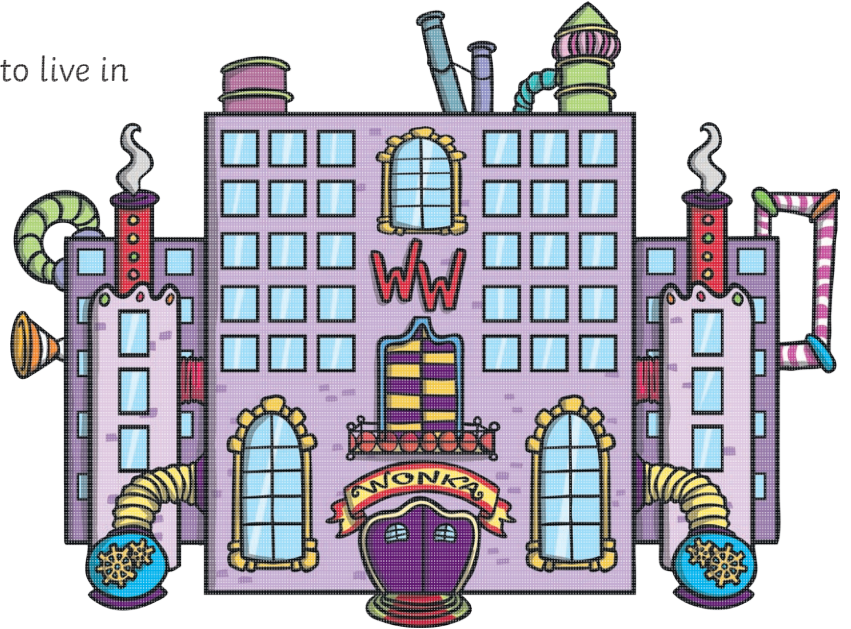
Charlie and the Chocolate Factory

Comprehension Questions

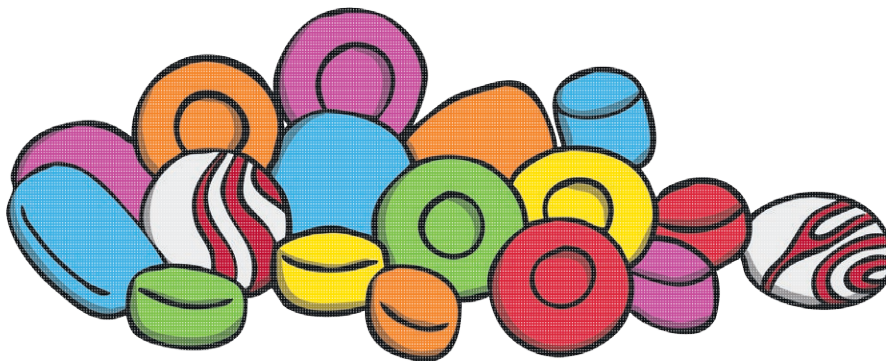
These questions are designed to help you think carefully about the middle of the story. Try to use evidence from the text to help you answer clearly.

Chapters 16, 17 and 18

1. Why did the Oompa Loompas have to live in tree houses in Loompaland?
2. What does Willy Wonka's boat look like?
3. How does Mrs Gloop feel when Augustus goes up the pipe?
4. The boat rockets along at a 'furious pace'. What does this mean?
5. What do all the capital letters at the end of Chapter 18 tell us?
6. What is the main problem in this section of the story?
7. Can you find two good words that describe Augustus Gloop?
8. Charlie thinks everything he has seen in the chocolate factory has been 'astonishing'. What does he mean?
9. Do you think Augustus Gloop is a good or bad character? Explain.
10. Is this section of the story exciting? What do you like about it?
11. Is there one main problem or lots of problems in this story?
12. Do you like the way Roald Dahl describes his characters? Why?



Remember to write in full sentences and lay out your work clearly.



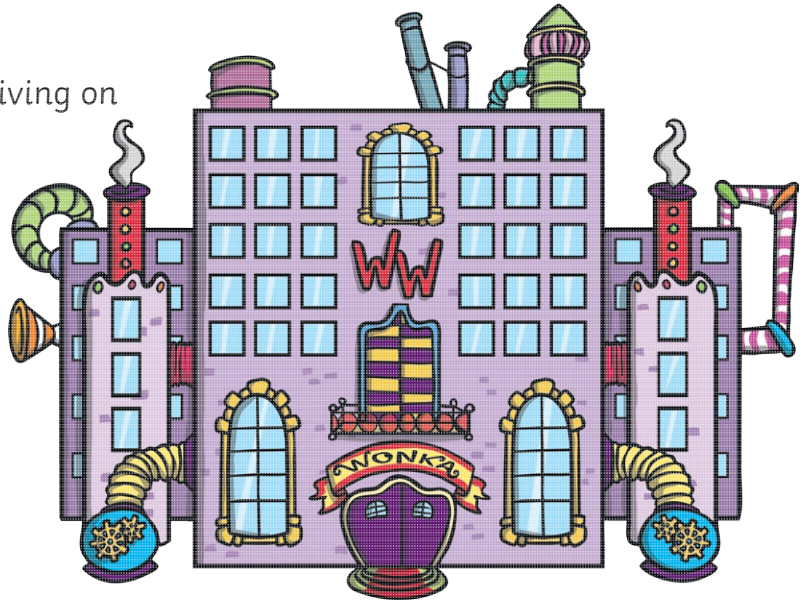
Charlie and the Chocolate Factory

Comprehension Questions

These questions are designed to help you think carefully about the middle of the story. Try to use evidence from the text to help you answer clearly.

Chapters 16, 17 and 18

1. What food were the Oompa Loompas living on in their own country?
2. Can you find a quotation to describe what happens to Augustus Gloop?
3. Why does Mrs Gloop feel angry when Augustus is sucked up the pipe?
4. How do you think the other children feel about what happens to him?
5. Augustus has met a sticky end. Who do you think will be next and why?
6. Do you think this is an exciting and effective middle section? Why?
7. Can you find a simile to describe how Augustus shoots up the pipe?
8. What phrase does Veruca Salt repeat, that shows us she is spoiled?
9. Do you think the Oompa Loompas are really joking in their song?
10. Who is your favourite character so far and why?
11. Is Willy Wonka a genius or a madman? Explain your answer.
12. Charlie and the Chocolate Factory was first published in 1964. Is it still interesting to readers in 2017? Can you explain why?



Remember to write in full sentences and lay out your work clearly.



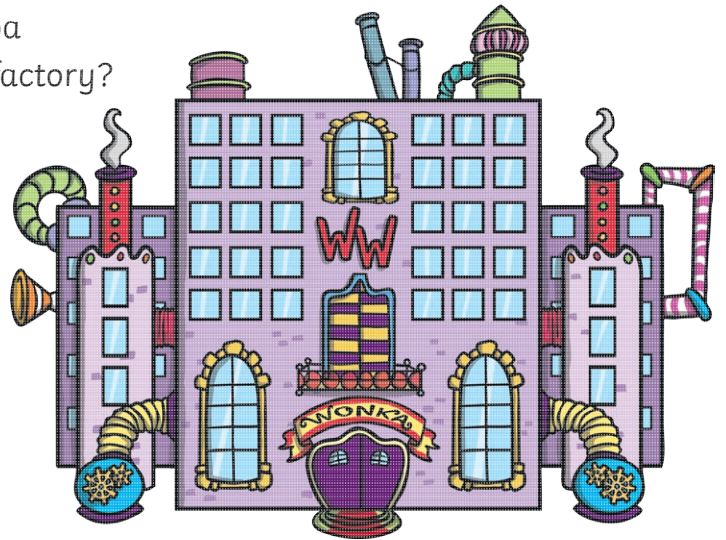
Charlie and the Chocolate Factory

Comprehension Questions

These questions are designed to help you think carefully about the middle of the story. Try to use evidence from the text to help you answer clearly.

Chapters 16, 17 and 18

1. How does Willy Wonka persuade the Oompa Loompas to come and work for him in his factory?
2. What is Mr Wonka most worried about when Augustus starts to drink from the
3. chocolate river?
4. Can you describe how Mr and Mrs Gloop feel about Augustus's fate?
5. Why do you think Mr Wonka claims the Oompa-Loompas' song is a joke?
6. This section is very fast-paced. What effect does this have on the reader?
7. Do you think this is an exciting and effective middle section? Why?
8. Can you find effective vocabulary to describe the 'fantastic pink boat'?
9. During the boat ride, one of the fathers is 'aghast'. What does this mean?
10. Do you think Roald Dahl approves of greediness? How do you know?
11. How does Dahl create an atmosphere of excitement on the boat?
12. Is Willy Wonka a genius or a madman? Explain your answer.
13. Charlie and the Chocolate Factory was first published in 1964. Is it still relevant to readers in 2017? Can you explain why?



Remember to write in full sentences and lay out your work clearly.

